



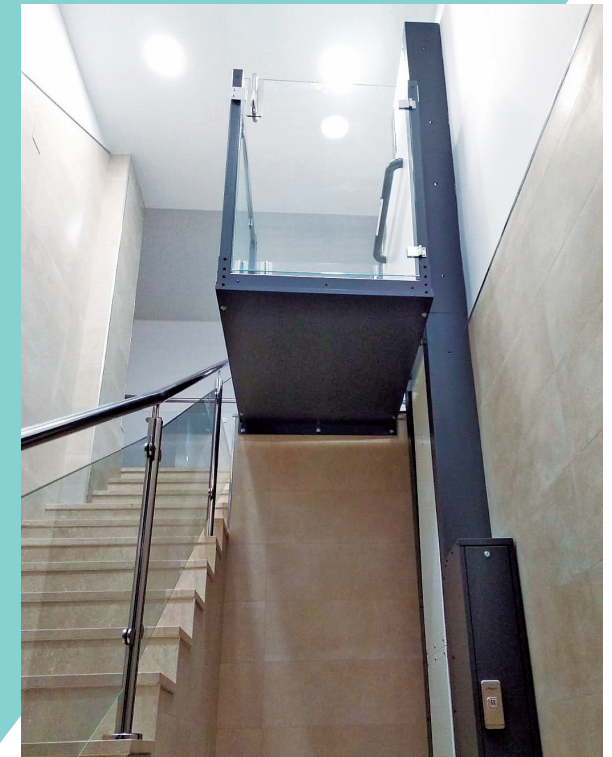
RALOE Stairlift Elevator vertical SVU (Smart Vertical Universal)



STAIRLIFT

In Raloe we have a product to overcome the architectural barriers that impede access to buildings, or a complete mobility in the homes themselves, and those disabled who need a wheelchair to travel.

It treats of Vertical elevator of use for people of reduced mobility, **Stairlift**. Compact, robust and ergonomic design. In accordance with the Machinery Directive 2006/42 / CE



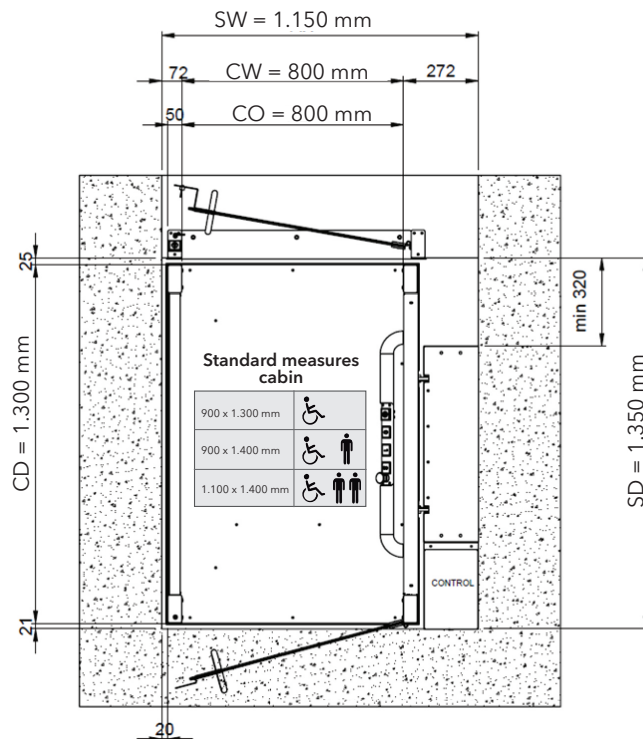
SW Shaft Width	CD Car Depth
SD Shaft Depth	CO Clear Opening
CW Car Width	

Technical characteristics:

- **Max. speed** up to 0.15 m / s *
- **Nominal load** up to 385kg
- **Max. Travel** up to 3 m. **
- **Supply** Single phase 220 V
- **Output** 2 HP (1,47 kw to 2,2 kw)
- **Min. pit** 100 mm

* With VVF regulation on the rise and 2-speed hydraulic valve on descent.

_DRAWING OF LANDING



Colour: Cab and column colour GRAPHITE (RAL 7024). Front screen and centre operating panel WHITE (RAL 9010).

CHARACTERISTICS

Traction: Acting 1: 1, by hydraulic cylinder of simple effect (up to 1.5 m and 2-stage telescopic, up to 3.0 m travel). Acting 2: 1 by hydraulic cylinder of simple effect up to 10 meters** travel. With closed hole and unit verification.

Hydraulic power unit with motor powered by 220 Vac single-phase input voltage, ultra-quiet spindle pump and high-performance mechanical valve.

Lifting load: Up to 385 Kg. Column made by galvanized metal profiles every 500 mm, specific guides for elevation that guarantees the perfect cabin frame guidance and compliance with bends according to EN81-20 standard.

Cabin frame made with galvanized metal profiles and galvanized steel blades.

Protection screens, around the perimeter of the column.

Piloted chassis interlock system, for pit inspection.

Power: Single-phase 220 Vac. Up to 2.2 Kw 16 A.

Controller by means of programmable and configurable automaton. 2 lines for viewing the status of the elevator and simple programming.

Cabin operating panel integrated in the handrail. Braille pushbuttons and acoustic indicators for overload and emergency.

Doors: Self-supporting door frame using tubular profiles and tempered glass.



SECURITY SYSTEMS

Certified safety valve EN-81.20 (safety valve in case of cable break for 2: 1 acting).

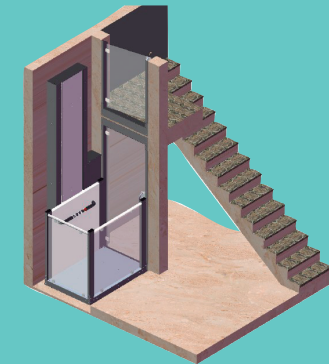
Weighs mechanical loads.

Drive by constant pulsation.

Non-slip cabin floor. In fluted aluminium.

Rescue: Via UPS 220 Vac, operation only in descent in case of power cut.

Electric security lock with unlocking by triangular key.



OPTIONS

- Perimeter protection bellows and sensitive edges.
- Mechanical closing doors.
- Console with Lighting.
- Safety kit for closed hole.
- Automatic doors.
- Telephone in the cabin.
- Finishes in any colour or Stainless steel.
- Wireless push buttons.
- Outdoor lift (stainless steel 304 and 316).
- Hand rail photocells.
- Photocells boarding.
- Tailored customizations.

BRANCH OFFICES

HEADQUARTER / BRANCH VALENCIA

C/ Coeters, 27, 46980 Paterna

T. +34 961 345 350

39.514439, -0.446309

BRANCH MADRID

C/ Arboleda 18, Nave L 28031 Madrid

T. +34 913 013 720

40.387926, -3.627316

BRANCH BARCELONA

C/ Montserrat Roig, 56 08908 L'Hospitalet.

T +34 932 643 910

41.350241, 2.124635

BRANCH FRANCE

Parc Actilo 10. Rue Gustave Eiffel 95190,
Goussainville.

T. +33 0 183 836 040

49.023324, 2.467375

email: comercial@raloe.com

www.raloe.com



RALOE EXPORT



T. (+34) 961 345 379
*and Field Technical Assistance
based in Reading*



T. (+33) 0 183 836 040



T. (+34) 961 369 428

email: export@raloe.com